

Define →

1. Autotrophic nutrition → The mode of nutrition in which the organism makes its food itself from simple inorganic substance is called autotrophic nutrition.
2. Parasitic nutrition → Organisms that derive their food from the body of the host plant or animal is called parasitic nutrition.
3. Omnivores → The animals which eat both plants and meat are called omnivores.
4. Photosynthesis → The process by which green plants make their food is called photosynthesis.
5. Symbiosis → Such relationship of mutually helping each other is called symbiosis.

Short Q Ans. Ch-1

Q1 → Why are the animals and humans called heterotrophs?

Ans → Because they are depend on other for their food.

Q2 → Name the factors which affect photosynthesis.

Ans → Light intensity, Nature of light, Carbon-dioxide, water and temperature.

Q3 → Name one each of :-

(a) Totally parasitic (b) Partial parasitic plants.

Ans (a) Totally parasitic → Fungi, Cuscuta (Amarbel), Bacteria.

(b) Partial parasitic plants → Mistletoe.

Q4 → How are the soil nutrients replenished?

Ans → Soil nutrients replenished by using manure by using fertilizers by crop rotation method.

Q5 → What is crop-rotation method?

Ans → Changing the crops according to season.

Q1 → What are the functions of food?

Ans → Functions of food :-

- ① Food provide us energy for our daily activities
- ② Food help us in growth and reproduction
- ③ Food provide us many immunity to fight against diseases
- ④ Food help us in proper body functioning.

Q2 → What is meant by nutrition? Draw a chart showing classification of the modes of nutrition.

Ans → Nutrition → The process of taking food and its utilization by the body is called nutrition.

Mode of Nutrition

① Autotrophic

② Heterotrophic.

Q3 → Describe photosynthesis. Name the various factors affecting photosynthesis

Ans → Green plants make their own food from carbon-di-oxide and water in the presence of chlorophyll and sunlight. The process by which green plants make their food is called photosynthesis.

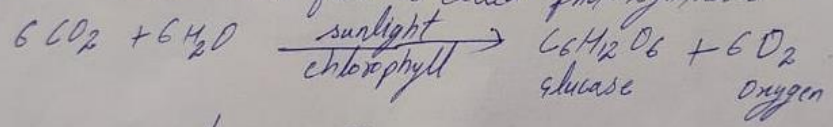


Diagram ①. - ? diagram are give separately on another page

* The various factors affecting photosynthesis

- ① Light intensity
- ② Nature of light
- ③ CO₂
- ④ Temperature

Q4 → Describe the role of leaves in photosynthesis?

Ans → Role of leaves in photosynthesis :- The inner structure of a leaf shown two important features →

- ① Presence of chlorophyll - containing cells.
- ② Presence of small pores generally on the under surface of the leaves. These pores are called stomata (singular: stoma) Carbon-di-oxide enters a leaf through these pores.

Diagram ② ?

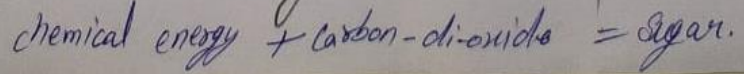


Diagram (3)

Q5 → Describe the term symbiosis. Give the name of a plant that exhibits symbiotic relationship.

Ans → The two plants which live together as parts of the same plant and mutually help each other. This type of relationship of mutually helping each other is called symbiosis.

eg → Lichen exhibits symbiotic relationship.

Very Short Q/Ans

Q1. Name the process by which green plants make their food.

Ans. Photosynthesis.

Q2. What type of heterotroph is a frog?

Ans. Carnivores.

Q3. What are the small pores on the under surface of the leaves called?

Ans → Stomata.

Q4 → What is the mode of nutrition in fungi?

Ans → Saprophytic nutrition.

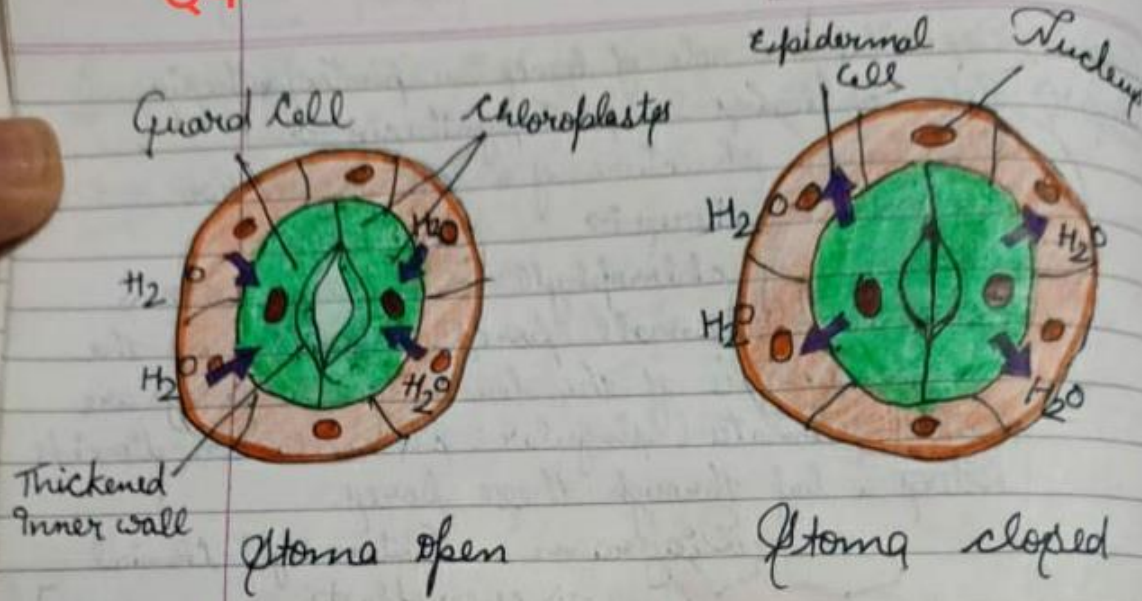
Q5 → Where does the bacterium Rhizobium live?

Ans → In the roots of a leguminous plant.

diagram no 3

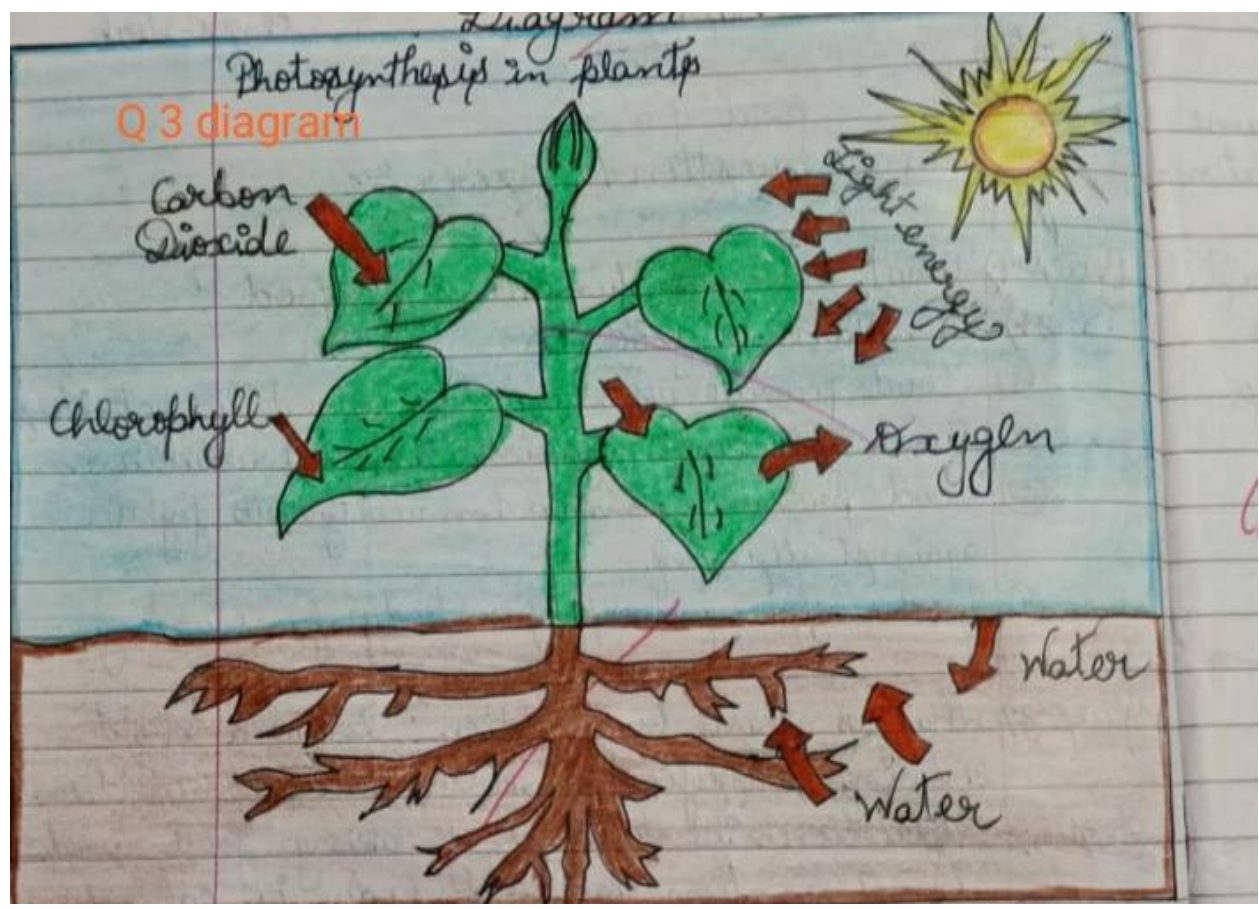
Q4

Date			
Page No.			



2 days class
Photosynthesis in plants

Q 3 diagram



Q 4 diagram

